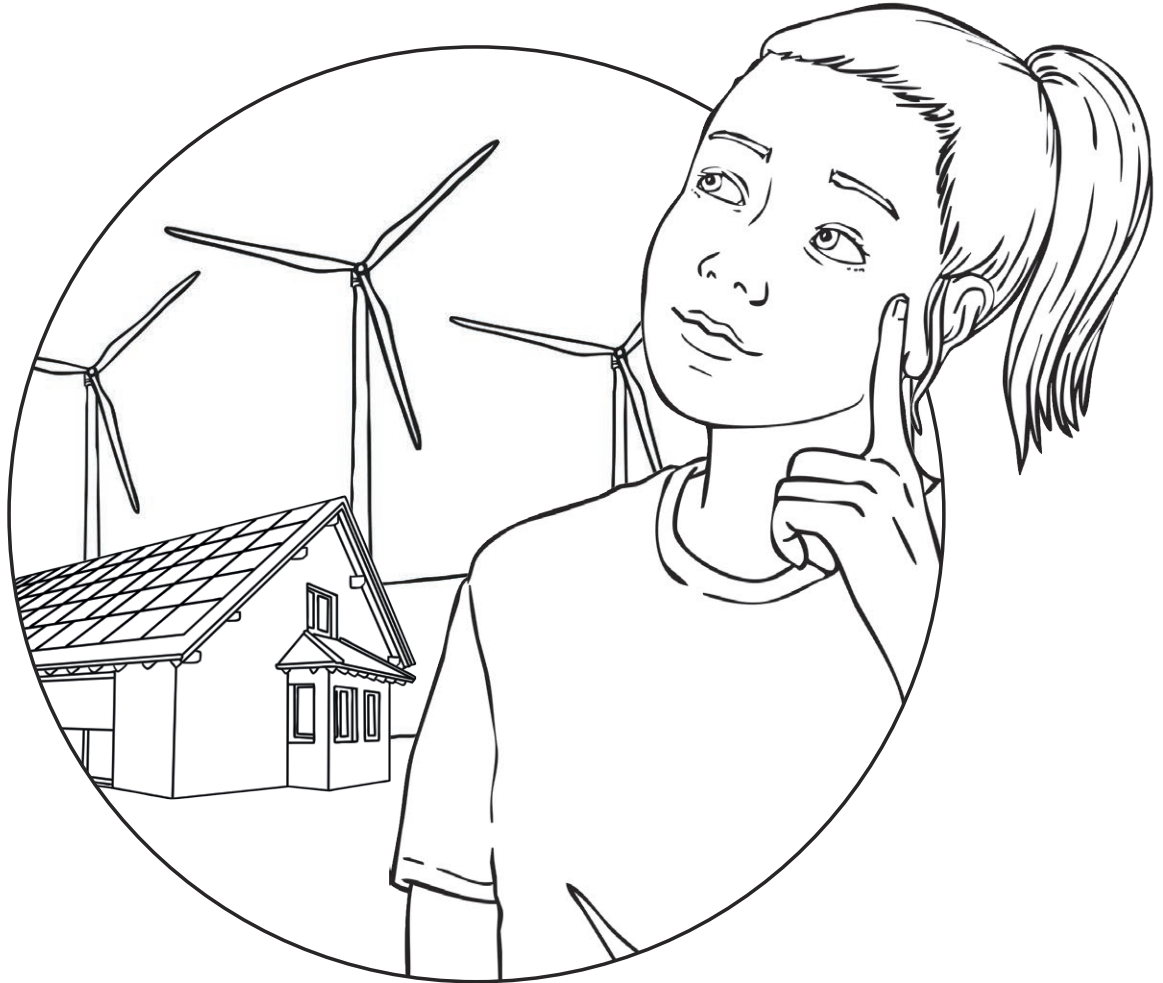


Renewable Energy

Field Notes Journal





You have been hired to make a recommendation on which resource would best fit a town that would like to transition to renewable energy. Read about the town and use your knowledge of the advantages and disadvantages of the different renewable resources to help make your selection. Explain your choice and draw a design illustration of the resource you chose.

Springland

Springland weather has frequent rainstorms with heavy winds. There is a narrow stream that runs through the center of town and leads to a small lake. The land consists of rolling hills and open prairies. The townspeople are ready to switch to renewable energy.

Renewable Resource Recommendation

Explanation

Design Illustration



Superville

Superville is a lush landscape. Large trees surround the homes and buildings, and plant life grows abundantly. The soil is soft, and there is an equal split between the sunny and rainy seasons. There are multiple broad rivers with strong flows throughout the town. The rainy season often causes these rivers to flood. Superville would like to transition to renewable energy.

Renewable Resource Recommendation

Explanation

Design Illustration

Thistle town

Thistle town is located in a desert landscape. There is little rain, and plant life is sparse. The ground is hard clay and farmers struggle to grow any crops in the town. There are a few small ponds located throughout the town, but droughts are often an issue. Thistle town would like to switch to renewable energy.

Renewable Resource Recommendation

Explanation

Design Illustration

Farmview

Farmview is a large farming town. The land produces many types of crops, and farmers are able to grow year-round. The land typically produces more crops than the farmers can sell at the local markets. The weather is mild, with low wind and average amounts of rain per year. Farmview is ready to transition to renewable energy.

Renewable Resource Recommendation

Explanation

Design Illustration